

Design of Bovine Semen Temperature Controller Using PID

Tatag Lindu Bhakti¹, Adhi Susanto², Paulus Insap Santosa³, Diah Tri Widayati⁴

^{1,2,3}Department of Electrical Engineering and Information Technology,

Faculty of Engineering, Gadjah Mada University.

Grafika Street No. 2, Yogyakarta, 55281. INDONESIA

⁴Faculty of Animal Science, Gadjah Mada University

Fauna Street No. 3, Bulaksumur, Yogyakarta, 55281. INDONESIA

Abstract

Development of better bovine's assisted reproduction device in livestock industry requires a temperature controller to help researcher choosing best bovine's spermatozoa. This study aims to design bovine's semen temperature controller prototype which fully controlled using PID (Proportional Integral Derivative) algorithm. Temperature target is achieved using combination between peltier module's polarity switching and PWM (Pulse-Width Modulation) regulation due to its real-time error status. Testing result shows bovine's semen temperature controller prototype were able to achieve linear response ranging from -5°C to 50°C with maximum cooling rate $-0,9^{\circ}\text{C/second}$ and maximum heating rate $1,7^{\circ}\text{C/second}$.

Keywords: temperature controller, bovine's semen, assisted reproduction, PID, PWM, peltier module, temperature stage.

1. Introduction

Development of better bovine's assisted reproduction device in livestock industry requires a supporting device which can help researcher to produce high-quality bovine calf. Technical constraint due to achieve better procedure finding best spermatozoa from leading male is important issue in high-quality bovine's calf production. This study aims to find a new method to assist researcher choosing best bovine's spermatozoa through sperm motility decrement using semen cooling method. By decreasing bovine's sperm motility, we expect professional observers can get better visualization when trying to recognize best bovine's spermatozoa.

2. Theoretical Basis

2.1. Peltier-Seebeck effect

Peltier effect is a phenomenon of heat exchange at thermocouple contact area in closed electricity circuit when a pair type of thermocouple is electrified in one direction. Discovery of peltier effect was published in 1834 by French physicist named J.C.A. Peltier, thirteen years after invention of thermoelectric effect by T.J. Seebeck. Both peltier and seebeck effects, they are often considered comes from an identical physical process [1].

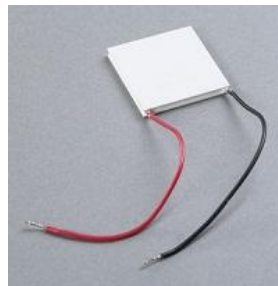


Figure 1 Peltier module (source: www.tetech.com)

Theory about peltier and seebeck effects are based on resultant analysis of electromotive force derived from electron concentration gradient in used thermocouple materials. The theory assumes if electron concentration is associated with thermal gradient that occurs when a series of thermocouples give direct-current electricity continuously. Refer to seebeck equation in [1]; electromotive force differences (ΔU) which measured at thermocouple contact area are given by (1)

$$\Delta U = \int_{T_1}^{T_2} (S_A(T) - S_B(T)) dT \quad (1)$$

where

$$S(T) = \varepsilon_0 \frac{T}{\theta_v + T} \quad (2)$$

and

$$\varepsilon_0 = \frac{k_B}{e} = 86,17 \mu V K^{-1} \quad (3)$$

T_1 and T_2 are temperature measured at thermocouple contact area, S is seebeck coefficient which depend on type of thermocouple material used, θ_v is thermocouple characteristic temperature, k_B is Boltzmann's constant and e is elementary charge. Refer to [1]; rate of heat interchange at thermocouple contact area is proportional to amount of electrical current. This phenomena can be written as (4)

$$\frac{dQ}{dt} = \pi \frac{dq}{dt} \quad (4)$$

with

$$\pi = \frac{dQ}{dq} \quad (5)$$

where π is Peltier coefficient, Q is heat absorbed or released at thermocouple contact area and q is amount of electrical charge flowing through closed circuit. According to Thomson, Peltier coefficient is dependent to temperature and can be rewritten as (6)

$$\pi(T) = S(T) T \quad (6)$$

And if (6) is substituted with (2), it will result final Peltier's equation (7)

$$\pi(T) = \varepsilon_0 \frac{T^2}{\theta_v + T} \quad (7)$$

2.2. PID control

PID control is a control algorithm which combines proportional, integral and derivative controllers. Refer to [2][3], PID control algorithm can be shown as (8)

$$V_0 = K_p e + K_i \int_{t_0}^t e dt + K_d \frac{de}{dt} \quad (8)$$

with V_0 is controller output signal, e is input error signal, t is time, K_p is proportional constant, K_i is integral constant and K_d is derivative constant. Equation (8) represents PID control in continuous time domain. If (8) will be applied in discrete domain system then PID continuous time domain equation must be changed into PID discrete time domain. By deriving (8) we can obtain (9)

$$\frac{dV_0}{dt} = K_p \frac{de}{dt} + K_i e + K_d \frac{d}{dt} \left(\frac{de}{dt} \right) \quad (9)$$

Subsequently, if dt is substituted using short time interval (Δt) of T then (9) will change into (10)

$$\frac{\Delta V_0}{T} = K_p \frac{\Delta e}{T} + K_i e + K_d \frac{\Delta}{T} \left(\frac{\Delta e}{T} \right) \quad (10)$$

or,

$$\Delta V_0 = K_p \Delta e + K_i e T + K_d \Delta \left(\frac{\Delta e}{T} \right) \quad (11)$$

based on the definition,

$$\Delta V_o = V_{on} - V_{on-1} \quad (12)$$

$$\Delta e = e_n - e_{n-1} \quad (13)$$

so (11) can be rewritten as (14)

$$V_{on} - V_{on-1} = K_p(e_n - e_{n-1}) + K_i e_n T + \frac{K_d}{T}(\Delta e_n - \Delta e_{n-1}) \quad (14)$$

and if defined

$$\Delta e_n = e_n - e_{n-1} \quad (15)$$

$$\Delta e_{n-1} = e_{n-1} - e_{n-2} \quad (16)$$

Then by substituting (15) and (16) into (14), we can get final PID equation shown in (17)

$$V_{on} = V_{on-1} + K_p(e_n - e_{n-1}) + K_i e_n T + \frac{K_d}{T}(e_n - 2e_{n-1} + e_{n-2}) \quad (17)$$

Equation (17) represents PID control equation in discrete time domain and ready to implement into any digital controller.

2.3. Pulse-Width Modulation (PWM)

PWM is a method to control electrical power transmitted into any electrical load in an electronic system using manipulated pulse-activation period [4]. Power intensity control was performed by regulating pulse train signal to get direct-current voltage equivalencies [5] [6] and can be expressed mathematically as (18)

$$\overline{V_{DC}} = \frac{1}{T} \int_0^T V(t) dt \quad (18)$$

where $\overline{V_{DC}}$ is PWM's output direct-current voltage equivalencies, T is working period of PWM's signal activation and $V(t)$ is PWM power supply voltage function. In PWM method, transmitted power equivalency is performed through manipulated signal activation period called duty cycle (D) [4]. $V(t)$ has $V_{DC \max}$ for $0 < t < DT$ and $V_{DC \min}$ for $DT < t < T$. D ranging from 0% to 100%. Mathematically, PWM's voltage equivalencies can be declared in (19)

$$\overline{V_{DC}} = \frac{1}{T} \left(\int_0^{DT} V_{DC \max} dt + \int_{DT}^T V_{DC \min} dt \right) \quad (19)$$

because $V_{DC \max}$ and $V_{DC \min}$ are constants which independent by time, equation (19) can be changed into (20)

$$\overline{V_{DC}} = \frac{DT V_{DC \max} + (1 - D)T V_{DC \min}}{T} \quad (20)$$

and can be rewritten as (21)

$$\overline{V_{DC}} = D V_{DC \max} + (1 - D) V_{DC \min} \quad (21)$$

From (21) it can be seen if D is determining parameter which can regulate $\overline{V_{DC}}$ directly. If (21) will be applied to controlling injected power to an electronic load, it can be simply changed D -value to generate direct-current output voltage equivalencies.

2.4. ATMEGA 8 microcontroller

Microcontroller is electronic devices which can be programmed to execute specific application routine. Physically, microcontroller is an integrated circuit consists of processor, RAM (Random Access Memory), permanent memory and input/output pin which can be programmed to communicate with external electronic devices.



Figure2 ATMEGA 8microcontroller [7]

Figure2 shows physical appearance of ATMEGA 8 microcontroller. Refer to [7]; ATMEGA 8 is an 8-bit microcontroller produced by ATMEL Corp. comes with 8 Kbyte Flash PEROM (Programmable and Erasable Read Only Memory) to store main program code. ATMEGA 8 can work up to 16 MHz clock frequencies. ATMEGA 8 main processor is designed using RISC processor architecture (Reduced Instruction-Set of Computing) named ATMEL AVR®.

3. Temperature Controller Devices Construction

Bovine'ssementemperature controller device is consisted of software and hardware parts which connected each other through serialcommunication. Software construction consists of GUI (Graphical UserInterface) to handle process interaction with user and make set pointinput, moving average block is used to filtering arbitrary datum which come from temperature sensor, deferential comparatoris used to calculating errorvalue, PIDcontrolblockis used as main control and serial communication block is used to establish communication with external hardware.

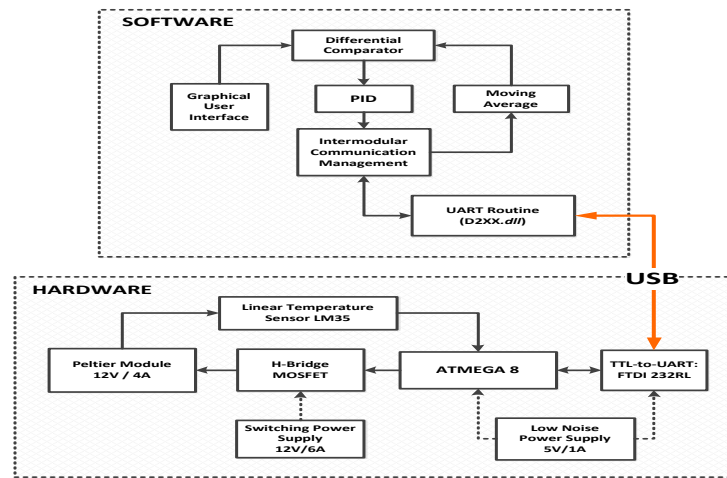


Figure 3 Block diagram of bovine'ssementemperature controller device

Hardware construction consists of serialcommunication module to make communication with main software, an AT MEGA 8 microcontrollerto generatePWM signal as ordered from software calculation, H-bridgecircuit to buffer injected current into peltier module, lineartemperaturesensorLM35 to make real time temperature measurement,switching power supplyforH-bridgeandlow noise power supply for microcontroller and signal acquisition.

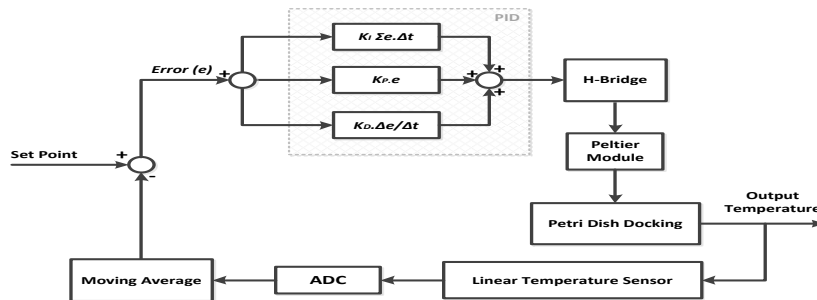


Figure4 PID control mechanism

When systemis turned on, software ordering hardware to getrealtime temperaturestatus from peltier moduleandat the same time.PIDcontrol algorithmis executed by (17)to achieve given set point as fast as possible. A duty cycle calculation result from PID issent toAT MEGA 8 through USB serialcommunication.Duty cycle order came from software then translated by

AT MEGA 8 intoreal duty cycle value. PWM output signal from AT MEGA 8 which referred (21) injected to H-bridge MOSFET circuit. At the other side, a switching power supply which connected to peltier module through H-bridge is used to supplying peltier module's power demand. Using this scheme, peltier's passed current can be fully controlled using software andat the same time, a linear temperaturesensor(LM 35) measuringpeltier module'stemperature and send it to software as feedback. PIDcalibrationis performed using reference[8].

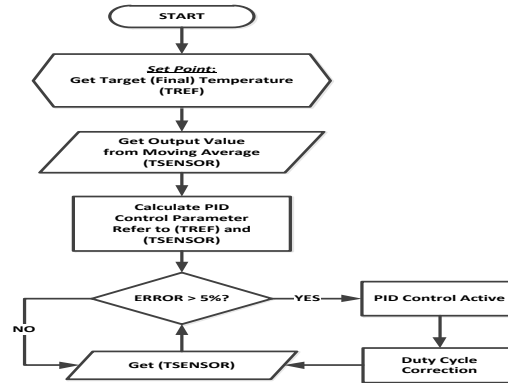


Figure5 Peltier module's temperature control method

4. Design results

Refer to diagrams in Figure3, 4 and 5; bovine's semen temperature controller consists of software and hardware which can communicate each other through serial communication lines. Figure6 shows software appearance (GUI) which has been successfully developed and Figure7 shows formed ice on preparation holder (-seered circle) when peltier module is operated at maximum cooling mode ($D = 100\%$)

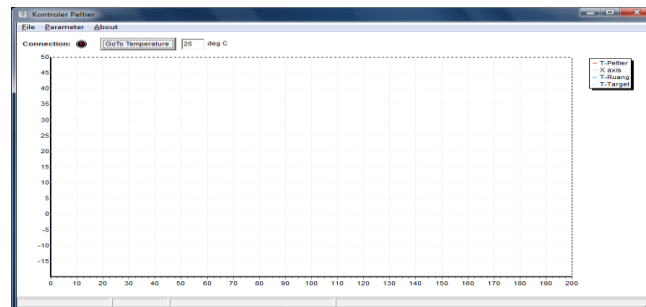


Figure6 Main software appearance

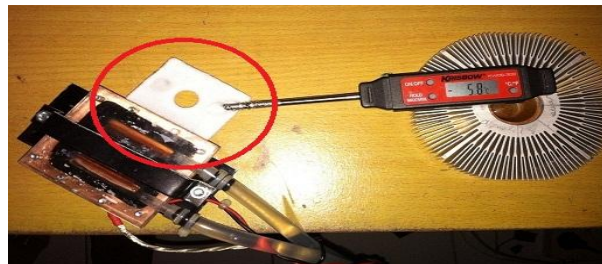


Figure7 Formed ice on bovine's semen preparation holder, see red circle
 $(T_{peltier} = -5,8^{\circ}C; D = 100\%; T_{ambient} = 25^{\circ}C)$

5. Testing

Overall system was tested using two methods. First testing method is using step testing signal to obtain peltier module temperature response versus input set point profile. Figure 8 shows peltier module cooling response and Figure 9 shows peltier module heating response.

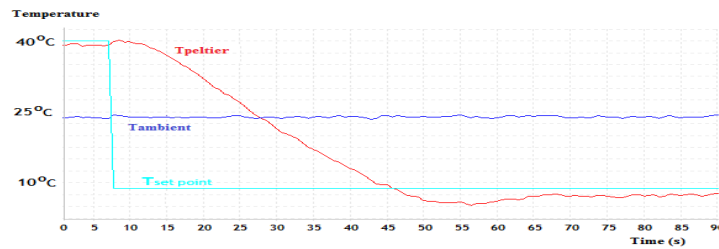


Figure 8 Peltier module's cooling response (40°C to 10°C)

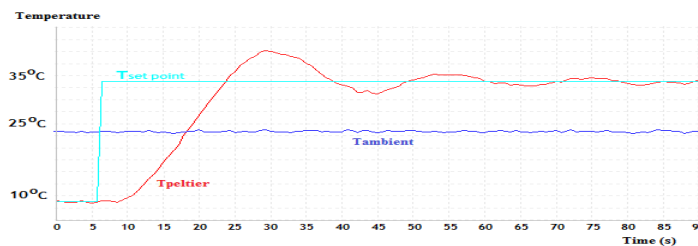


Figure 9 Peltier module's heating response (10°C to 35°C)

From Figure 8 and Figure 9, it can be known if preparation holder temperature has maximum cooling rate $-0.9^{\circ}\text{C}/\text{second}$ and maximum heating rate $1.7^{\circ}\text{C}/\text{second}$. It also seems if steady-state temperature condition is reached faster in cooling mode compared to heating mode. Overshoot is highly visible when system is operated in heating mode.

Second test method is performed by changing set point value continuously to obtain peltier module's steady-state temperature response due to any set point input. This test aims to measure hardware output temperature fidelity due to any desired input set point. Figure 10 shows peltier module's linearity response profile ranging from -30°C to 50°C of set point command. Refer to Figure 10, it can be seen if hardware has linear temperature response profile ranging from -5°C to 50°C in standard testing temperature pressure ($25^{\circ}\text{C}/1\text{ atm}$). Set point testing over 50°C was not performed because uncontrollable overshoot potency which can damage peltier module.

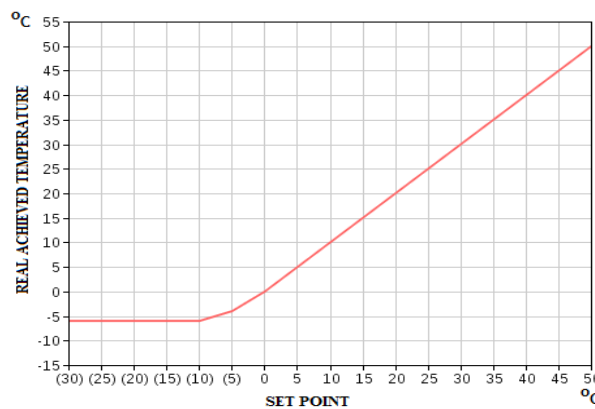


Figure 10 Setpoint temperature fidelity responses

6. Conclusion

From testing results, it can be known if bovine's semen temperature controller has linear temperature response profile ranging from -5°C to 50°C in standard testing temperature pressure ($25^{\circ}\text{C}/1\text{ atm}$). System has maximum cooling rate $-0.9^{\circ}\text{C}/\text{second}$ and maximum heating rate $1.7^{\circ}\text{C}/\text{second}$. Heating control responses above ambient (room) temperature are not symmetrical with cooling control responses below ambient temperature; therefore this control system prototype still need further research to make adaptable control system for any temperature condition given.

Acknowledgements

Authors would thank to all of Civitas Academica Electrical Engineering Department and Animal Science Department GadjahMada University and PT. Miconos Transdata Nusantara (www.miconos.co.id) which provided facility for temperature stage prototyping testing and calibration.

References

- [1] V. A. Drebuschak. The Peltier Effect. J. Thermal Anal. and Cal., Vol. 91-1, pp. 311-315, 2008.
- [2] Thiang, H. Khoswanto and E. Pangaldus. Position Control of a Manipulator Using PID Control Algorithm Based on ATmega8535 Microcontroller. Int. Conference on Instrumentation, Control & Automation (ICA) 2009, ISBN 978-979-8861-05-5, pp. 196-199, 2009.
- [3] W. Ye, J. Xu, Y. Zhu and Y. Chen. Research on Intelligent PID Control Strategy of Thermal Control Object. 3rd Int. Conference on Measuring Technology and Mechatronics Automation. 978-0-7695-4296-6/11. DOI 10.1109/ICMTMA.2011.573, IEEE pp.7-10, 2011.
- [4] S. Pongswatd, A. Chaikla, P. Ukakimapurn and K. Tirasesth. Digital Technique to Generate Variable and Multiple PWM Signals. IEEE 0-7695-2882-1/07, 2007.
- [5] X. Lu, S. Chen, C. Wu and M. Li. The Pulse Width Modulation and Its Use in Induction Motor Speed Control. 4th Int. Symposium on Computational Intelligence and Design. 978-0-7695-4500-4/11. DOI 10.1109/ISCID.2011.150. pp. 195-198, 2011.
- [6] R. Rajendran and N. Devarajan. FPGA Implementation of Space Vector PWM Technique for Voltage Source Inverter Fed Induction Motor Drive. 2nd Int. Conference on Computer and Electrical Engineering. 978-0-7695-3925-6/09 IEEE. DOI 10.1109/ICCEE. 2009.119, pp. 422-426, 2009.
- [7] Datasheet AT MEGA 8/L (Rev.2486Z-AVR-02/11). Available [Online] at <http://www.atmel.com/>
- [8] F. Haugen. Basic Dynamics and Control. ISBN 978-82-91748-13-9, 2010.

Appendix:



Figure A.1. Bovine's semen temperature control hardware

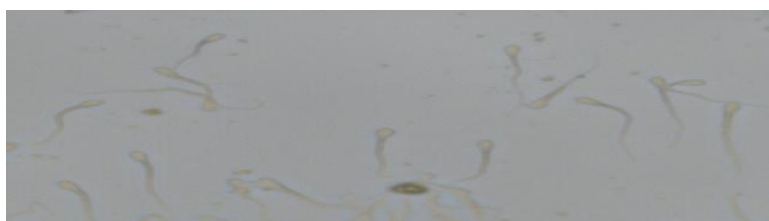


Figure A.2. Bovine's sperms at low temperature (4°C) hold for 15 minutes
(All bovine sperm's motility decreased to zero)